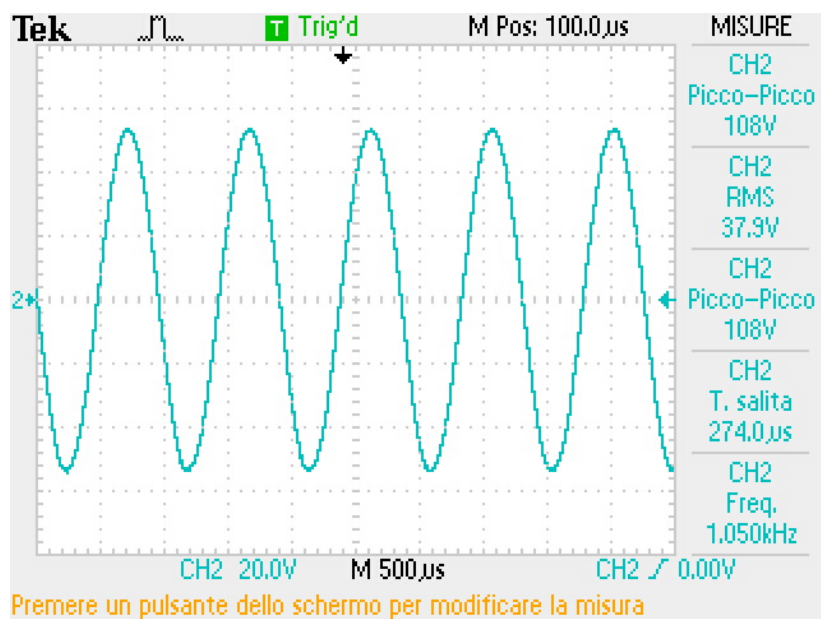
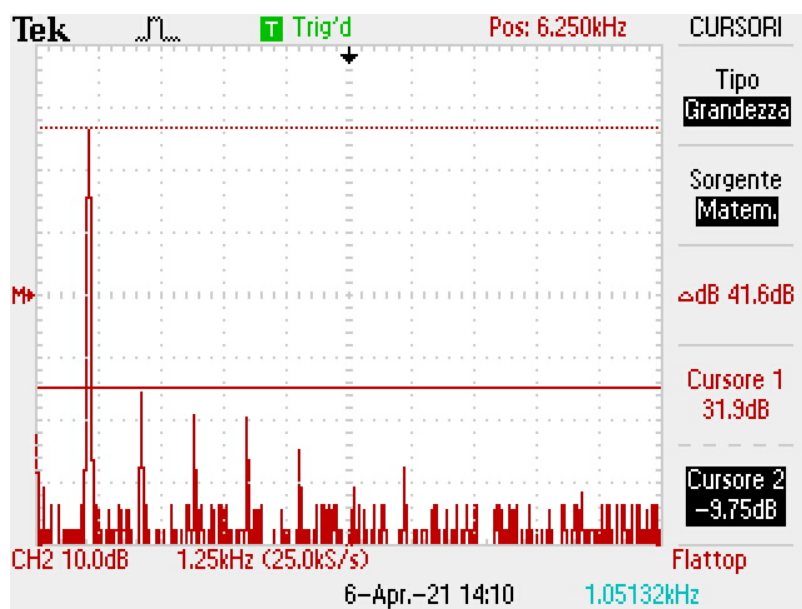


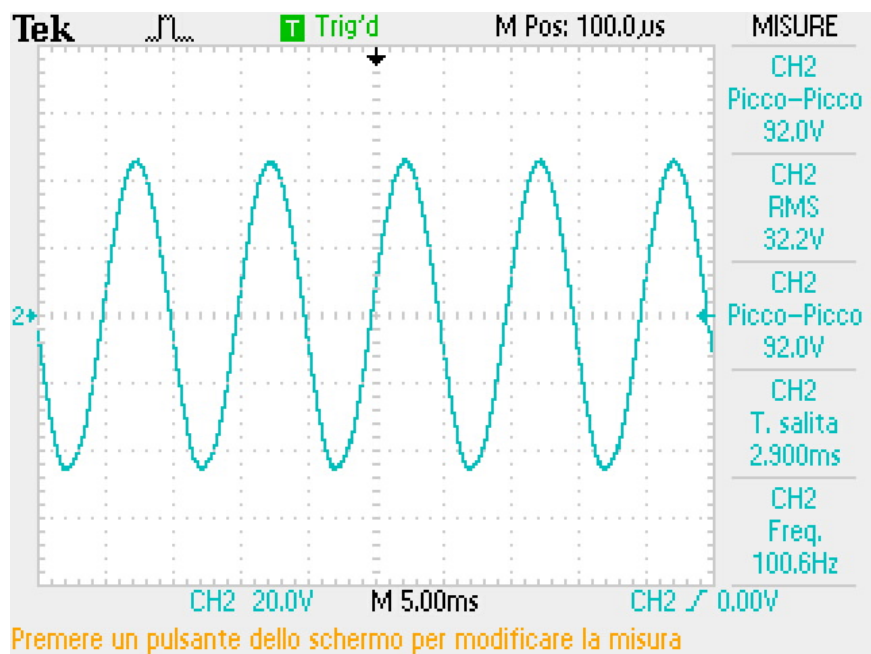
CLINAMENAUDIO



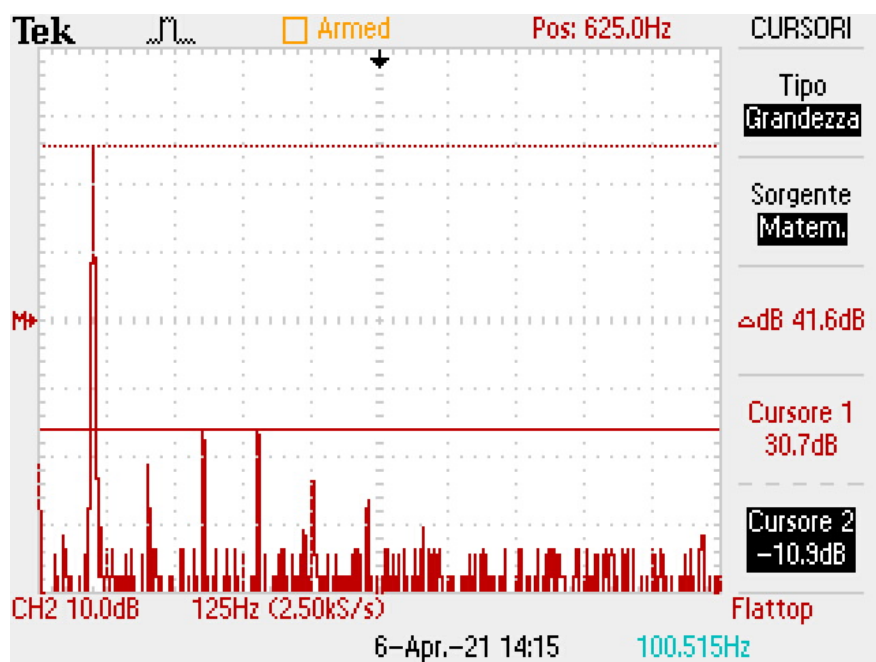
Accettazione a 1KHz. 37.9 Vrms in uscita



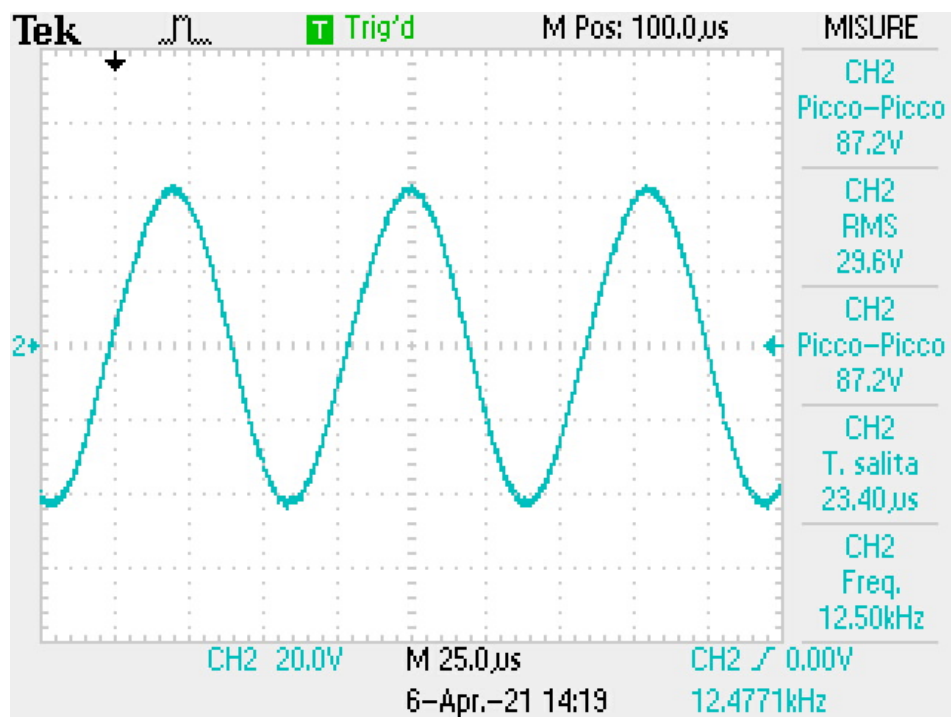
FFT del segnale di cui sopra. D2 -41.6 dB / D3 -45,2dB / D4 -47,6 dB / D5 -50,8



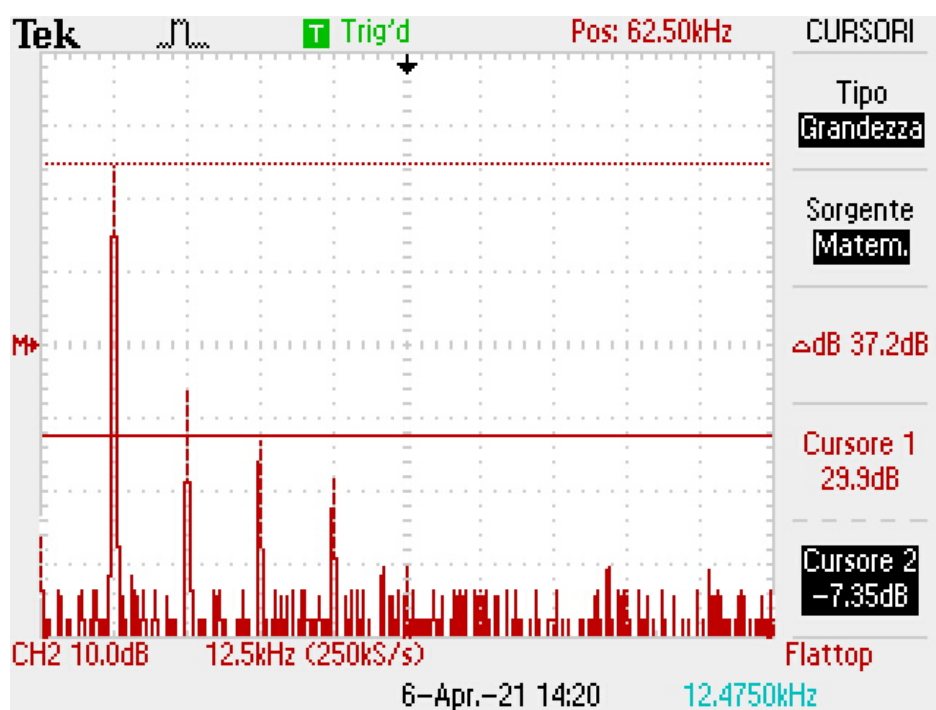
Accettazione a 100 Hz. 32,2 Vrms in uscita



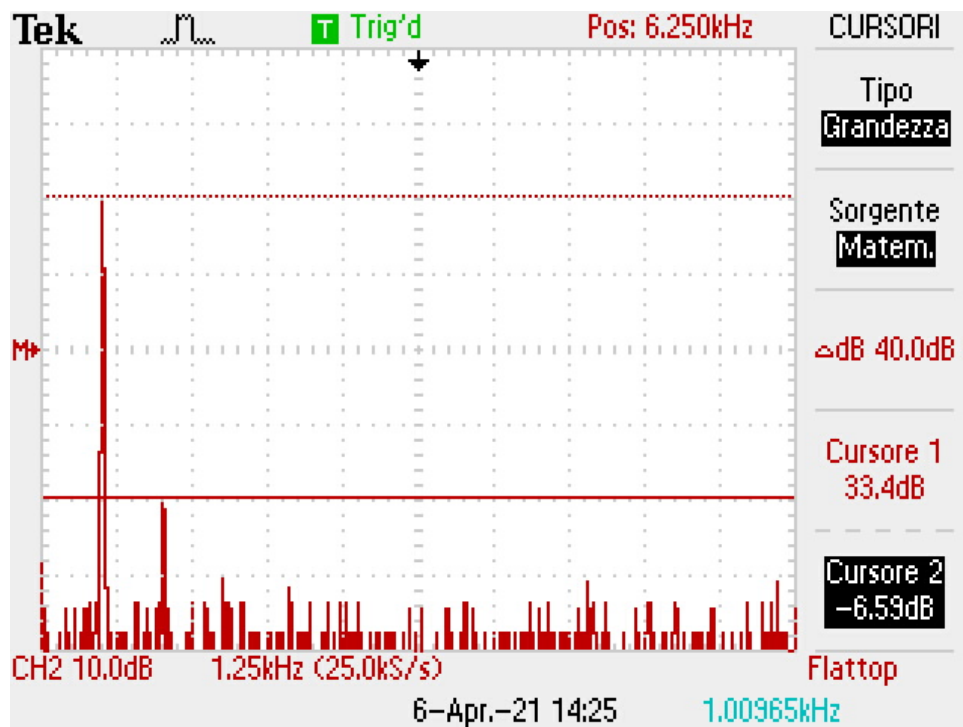
FFT del segnale di cui sopra. D2 -45.6 dB / D3 -41,6/ D4 -42,4 dB / D5 -48,4



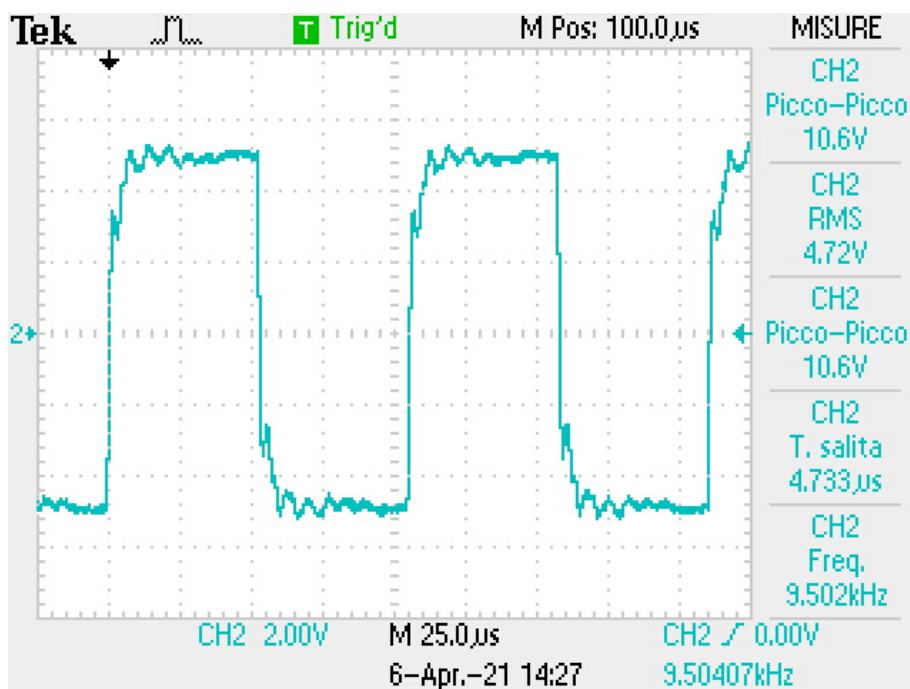
Accettazione a 12,5 KHz. 29,6 Vrms in uscita



FFT del segnale di cui sopra. D2 -31,2 dB /D3 -37,2/ D4 -42,4 dB



FFT ad 1 KHz in uscita del primo stadio , per un livello di 42 Vrms



Quadra a 10 KHz in uscita , iniettando il segnale in ingresso del secondo stadio

+39.3408756612
0735.782043
www.clinamenaudio.com
info@clinamenaudio.com



P.Iva: 021 2359 0446
C.da Barattelli 3/A
63074
San Benedetto del Tronto